

\$944,990 - 126 Barbury Close, Sherwood Park

MLS® #E4429218

\$944,990

4 Bedroom, 3.50 Bathroom, 2,539 sqft

Single Family on 0.00 Acres

Salisbury Village, Sherwood Park, AB

Welcome to Salisbury Village in the beautiful community of Sherwood Park! This 4 bed + 3 bath home was designed with family in mind. Your large chef's kitchen features stylish white subway tile, stainless steel appliances, + beautiful finishes. Your sizeable dining room is perfect for dinners with loved ones. Get comfortable in your living room with a gorgeous brick fireplace. Retreat to your upstairs primary bedroom with a lovely ensuite for your privacy. 2 more bedrooms are upstairs for your little ones. Family movie nights will be even cozier in your comfortable large bonus area. New carpet covers your entire upstairs! Host overnight guests in your newly finished basement that has its own kitchen, bathroom + additional bedroom. With the summer months on the horizon, you can look forward to BBQ's in your fully fenced backyard + an evening soak in the hot tub! Keep vehicles stored + secure in your oversized garage. Enjoy life in this family-friendly suburbs close to excellent schools, parks + amenities!

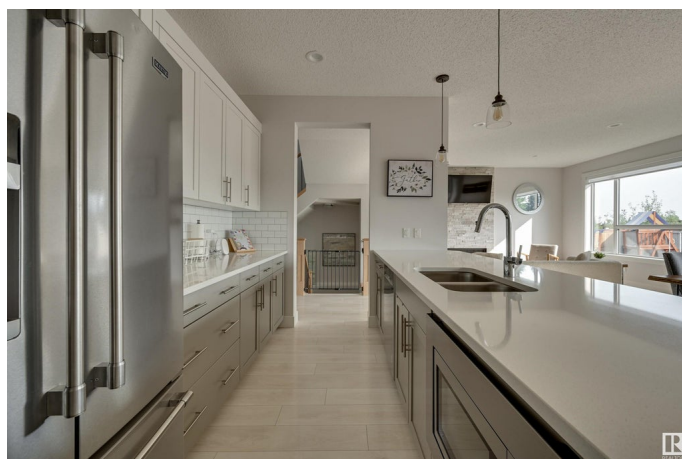
Built in 2017

Essential Information

MLS® # E4429218

Price \$944,990

Bedrooms 4



Bathrooms	3.50
Full Baths	3
Half Baths	1
Square Footage	2,539
Acres	0.00
Year Built	2017
Type	Single Family
Sub-Type	Detached Single Family
Style	2 Storey
Status	Active

Community Information

Address	126 Barbury Close
Area	Sherwood Park
Subdivision	Salisbury Village
City	Sherwood Park
County	ALBERTA
Province	AB
Postal Code	T8B 0B5

Amenities

Amenities	Off Street Parking, On Street Parking, Carbon Monoxide Detectors, Ceiling 9 ft., Deck, Detectors Smoke, Hot Tub, No Smoking Home, Smart/Program. Thermostat, HRV System
Parking Spaces	4
Parking	Double Garage Attached

Interior

Interior Features	ensuite bathroom
Appliances	Air Conditioning-Central, Garage Opener, Hood Fan, Microwave Hood Fan, Oven-Microwave, Stove-Electric, Stove-Gas, Vacuum System Attachments, Vacuum Systems, Window Coverings, Dryer-Two, Refrigerators-Two, Washers-Two, Dishwasher-Two, Hot Tub
Heating	Forced Air-1, In Floor Heat System, Natural Gas
Fireplace	Yes
Fireplaces	Heatilator/Fan, Stone Facing
Stories	3
Has Basement	Yes
Basement	Full, Finished

Exterior

Exterior	Wood, Hardie Board Siding
Exterior Features	Cul-De-Sac, Fenced, Golf Nearby, Landscaped, No Back Lane, Playground Nearby, Public Swimming Pool, Public Transportation, Schools, Shopping Nearby
Roof	Asphalt Shingles
Construction	Wood, Hardie Board Siding
Foundation	Concrete Perimeter

School Information

Elementary	Pine Street School
Middle	Sherwood Heights School
High	Salisbury Composite School

Additional Information

Date Listed	April 4th, 2025
Days on Market	94
Zoning	Zone 25

DATA IS DEEMED RELIABLE BUT IS NOT GUARANTEED ACCURATE BY THE REALTORS® ASSOCIATION OF EDMONTON. COPYRIGHT 2025 BY THE REALTORS® ASSOCIATION OF EDMONTON. ALL RIGHTS RESERVED.Trademarks are owned or controlled by the Canadian Real Estate Association (CREA) and identify real estate professionals who are members of CREA (REALTOR®, REALTORS®) and/or the quality of services they provide (MLS®, Multiple Listing Service®)

Listing information last updated on July 6th, 2025 at 10:17pm MDT