

## \$0 - 1059 Parsons Road, Edmonton

MLS® #E4440680

**\$0**

0 Bedroom, 0.00 Bathroom,  
Office on 0.00 Acres

Ellerslie Industrial, Edmonton, AB

Prime leasing opportunity in South Edmonton on busy Parsons Road! This upper-floor office space offers 1,000 square feet. Located in a high-traffic, well-established commercial area, this space is ideal for professional services or creative studios. Flexible layout options to suit your needs.

Built in 2010

### Essential Information

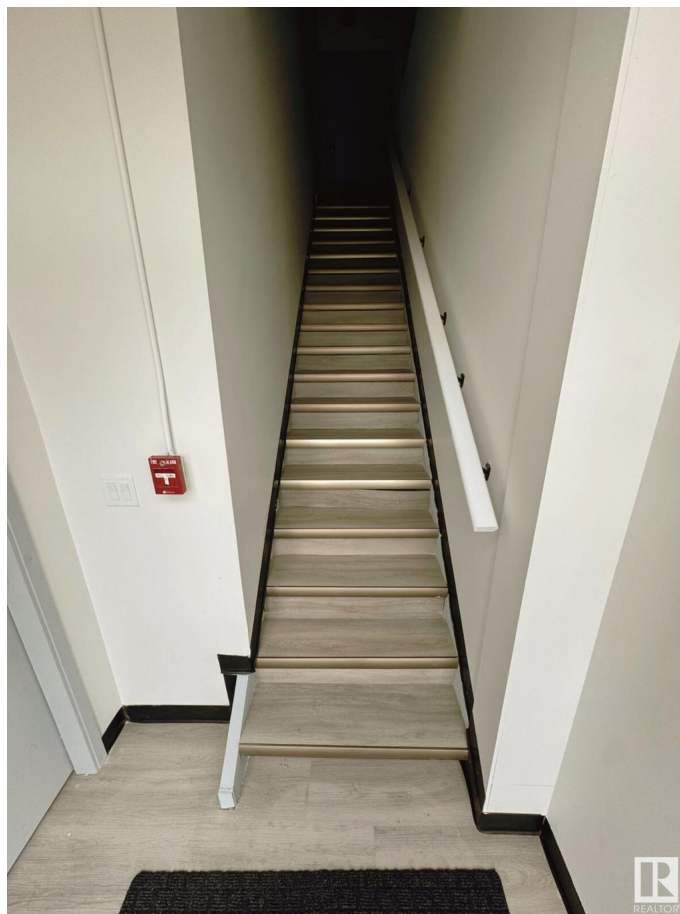
MLS® #	E4440680
Bathrooms	0.00
Acres	0.00
Year Built	2010
Type	Office
Status	Active

### Community Information

Address	1059 Parsons Road
Area	Edmonton
Subdivision	Ellerslie Industrial
City	Edmonton
County	ALBERTA
Province	AB
Postal Code	T6X 0X2

### Exterior

Exterior	Mixed
----------	-------



Construction           Mixed

**Additional Information**

Date Listed           June 3rd, 2025

Days on Market    27

Zoning               Zone 54

DATA IS DEEMED RELIABLE BUT IS NOT GUARANTEED ACCURATE BY THE REALTORS® ASSOCIATION OF EDMONTON. COPYRIGHT 2025 BY THE REALTORS® ASSOCIATION OF EDMONTON. ALL RIGHTS RESERVED.Trademarks are owned or controlled by the Canadian Real Estate Association (CREA) and identify real estate professionals who are members of CREA (REALTOR®, REALTORS®) and/or the quality of services they provide (MLS®, Multiple Listing Service®)

Listing information last updated on June 30th, 2025 at 5:32pm MDT