

## \$449,900 - 381 Village Terrace, Sherwood Park

MLS® #E4441915

**\$449,900**

3 Bedroom, 3.00 Bathroom, 1,055 sqft  
Single Family on 0.00 Acres

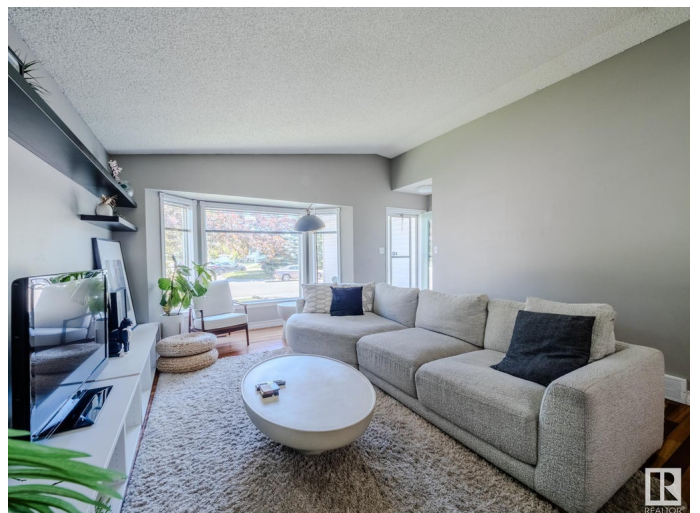
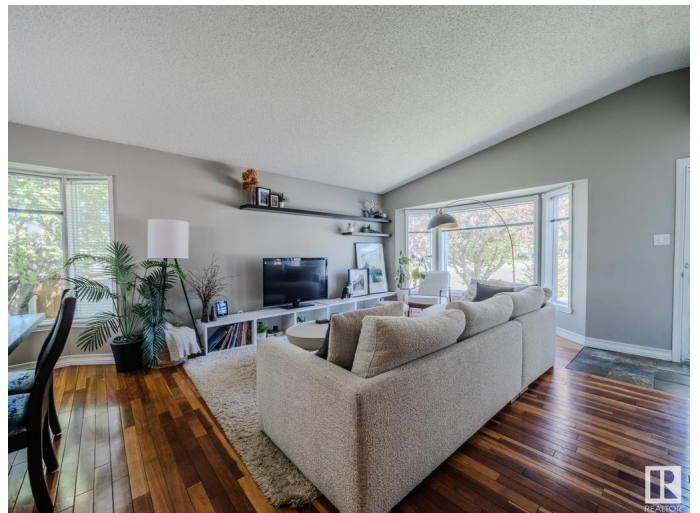
Village on the Lake, Sherwood Park, AB

Welcome to this beautifully updated home featuring an ATTACHED GARAGE and a thoughtfully designed interior. With over 2000 sq ft of total living space, step inside to discover rich HARDWOOD FLOORING and elegant SLATE TILE, creating a warm and inviting feeling throughout. The VAULTED CEILING in the living and dining room enhances the sense of space and light, making it perfect for both relaxing and entertaining. The kitchen is equipped with STAINLESS STEEL APPLIANCES and leads down to a huge rec room with ELECTRIC FIREPLACE. Outside you will find a very private yard complete with a DECK, OUTDOOR GRILLING AREA and PERGOLA, ideal for summer gatherings or quiet evenings with the family. Don't miss your chance to own this great property that's ready for you to move in and enjoy!

Built in 1985

### Essential Information

MLS® #	E4441915
Price	\$449,900
Bedrooms	3
Bathrooms	3.00
Full Baths	2
Half Baths	2



Square Footage	1,055
Acres	0.00
Year Built	1985
Type	Single Family
Sub-Type	Detached Single Family
Style	4 Level Split
Status	Active

### Community Information

Address	381 Village Terrace
Area	Sherwood Park
Subdivision	Village on the Lake
City	Sherwood Park
County	ALBERTA
Province	AB
Postal Code	T8A 4V9

### Amenities

Amenities	Barbecue-Built-In, Deck, Hot Water Natural Gas, Vaulted Ceiling
Parking Spaces	4
Parking	Double Garage Attached

### Interior

Interior Features	ensuite bathroom
Appliances	Dishwasher-Built-In, Dryer, Freezer, Microwave Hood Fan, Refrigerator, Storage Shed, Stove-Electric, Washer
Heating	Forced Air-1, Natural Gas
Fireplace	Yes
Fireplaces	Stone Facing
Stories	4
Has Basement	Yes
Basement	Full, Finished

### Exterior

Exterior	Wood, Vinyl
Exterior Features	Corner Lot, Cul-De-Sac, Fenced, Golf Nearby, Landscaped, No Back Lane, Playground Nearby, Public Transportation, Schools, Shopping Nearby
Roof	Asphalt Shingles

Construction	Wood, Vinyl
Foundation	Concrete Perimeter

**Additional Information**

Date Listed	June 12th, 2025
Days on Market	33
Zoning	Zone 25

DATA IS DEEMED RELIABLE BUT IS NOT GUARANTEED ACCURATE BY THE REALTORS® ASSOCIATION OF EDMONTON. COPYRIGHT 2025 BY THE REALTORS® ASSOCIATION OF EDMONTON. ALL RIGHTS RESERVED.Trademarks are owned or controlled by the Canadian Real Estate Association (CREA) and identify real estate professionals who are members of CREA (REALTOR®, REALTORS®) and/or the quality of services they provide (MLS®, Multiple Listing Service®)

Listing information last updated on July 15th, 2025 at 4:02am MDT